

The Ironbridge Gorge Museum Trust is a Charitable Trust
Ref No. 503717-R

ACKNOWLEDGEMENTS

Throughout the compilation of this document the Ironbridge Gorge Museum Trust has had support and assistance from Telford & Wrekin Council.

The Ironbridge Gorge Museum Trust would like to record its thanks to the Telford & Wrekin Readers Group for their helpful suggestions when producing this document.

We value your comments and suggestions - If you have any comments or suggestions you would like to make about this guide please note them down below, or alternatively, please tell a member of staff at the Reception Desk. Thank you.

NOTES:

A detailed Access Guide to Blists Hill VICTORIAN TOWN



This Guide contains an overview of Access for:

Visitors with physical and sensory disabilities



Assistance Dogs are welcome on site and into all the exhibits.

- The information given in this booklet is a **detailed** guide about access into the individual exhibits within **Blists Hill Victorian Town**.
- **The numerals in the text refer to the individual exhibit locations on the colour map attached.**
- A **general** Access Guide to all 10 of the **Ironbridge Gorge Museums** is available free of charge from each reception.

- **Blists Hill Victorian Town** covers 52 acres and is made up of multiple terrains including shale roadways, block paving, cobbles, a canal towpath and woodland terrain. The weather conditions can change the terrain quite dramatically, especially along the canal towpath. The exhibits themselves are either original to the site, reconstructed brick by brick or replicas of typical buildings of the period and therefore some, unfortunately, prove difficult to access. Any of the costumed demonstrators in any of the exhibits or walking around the Town will be happy to give information and a full colour Guide Book to the site is available to buy from the Entrance Shop.
- **This guide** lists all the exhibits in numerical order and follows the full colour map attached but you may explore the site in any way you prefer. After the Bakery **36** the land begins to slope steeply, 'Furnace Bank' (1 in 16) to the Lower Town and wheelchair users are not advised to go beyond this point without a companion. An Incline Lift **50** is available off the canal towpath (natural surface) to facilitate access to the lower part of the Town. We would not advise going along Miner's Walk **55** which is rough natural woodland terrain.
- Visitors are welcome to use personal motorised scooters. Routes around the site are of varying gradients, the steepest of which is 1 in 16 (6.25%) and expect to cover at least 2 miles.
- The Mine Railway and Mine Experience **51** offers full access, but like the Visitor Centre audio visual, contains short periods of total darkness and loud bangs!

53 Shelton Tollhouse

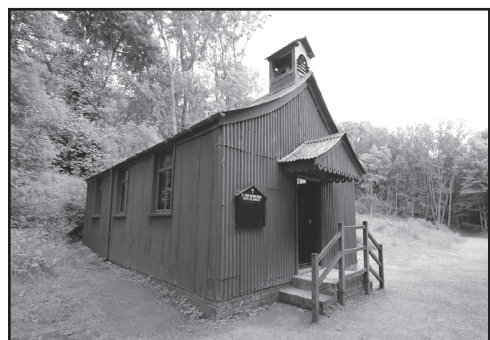


ACCESSIBLE *

Access from shale roadway up small step into front room, door restricts width into backroom, limited space.



54 Mission Church



DIFFICULT ACCESS ***

Steep stone steps into Church from shale roadway.

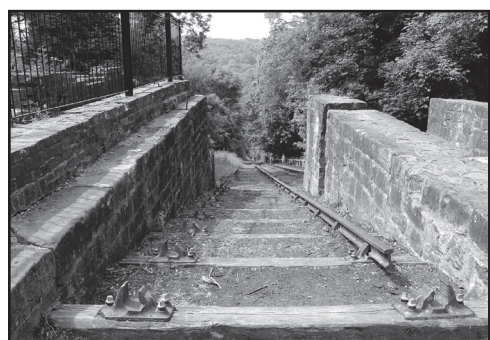
55 Miners Walk



DIFFICULT ACCESS ***

Not suitable for wheelchair users.

56 Hay Inclined Plane



DIFFICULT ACCESS ***

Requires long walk along rough canal towpath at Upper Town level or along Miners Walk at lower Town level.

57 - Alternative access to the lower Town by prior arrangement with Reception staff who will contact the Duty Officer. Return to your vehicle and drive 600 yards downhill to the Staff Car Park and enter via gate 6.

Key to symbols used in this guide:

ACCESSIBLE *

- A ramp or incline provide access for all visitors.

LIMITED ACCESS **

- Small steps may limit access for visitors with restricted mobility and access is best achieved with the aid of a helper.

DIFFICULT ACCESS ***

- Large steps and restricted door widths make access difficult for those with restricted mobility and limited access may be achieved with the aid of a helper.



- Loop system available in this exhibit.



- Some of the exhibits are manned by costumed demonstrators who will explain the surroundings and tell you about the history of a specific exhibit.



- Assistance Dogs are welcome on site and into all the exhibits.



Unisex Accessible Toilets and baby changing facilities are available at the Visitor Centre **1** off the main car park, in the Visitor Centre Café on the first floor (lift available), and in the Forest Glen Refreshment Pavilion **45** on ground level, in the lower part of the Town.


Rest Stops

Seating is available throughout the site, please ask any of the costumed demonstrators for the nearest rest stop.

① The Visitor Centre - Main Entrance



ACCESSIBLE *

Access to Blists Hill Victorian Town is through the Visitor Centre. Internal Lift available to the 1st floor level, the Visitor Centre Café and the Victorian Town. An atmospheric audiovisual  on the ground floor gives an overview of the Victorian Town.

The Entrance Toilets



ACCESSIBLE *

Access to the Entrance Toilets from the car park. Unisex accessible toilet and baby changing facilities also available.

The Entrance Café



ACCESSIBLE *

Access to Entrance Café. Lift available to Café level. Unisex accessible toilet and baby changing facilities also available.

Entering the Victorian Town



ACCESSIBLE *

When you enter the Victorian Town you emerge from a dark interior to the bright light of the outdoors and onto a shale roadway. 22m (25yds) walk to the first exhibit.

You are now entering the Victorian era!

④9 The Green



ACCESSIBLE *

Flat smooth grassed area, accessible from three sides off shale pathway.

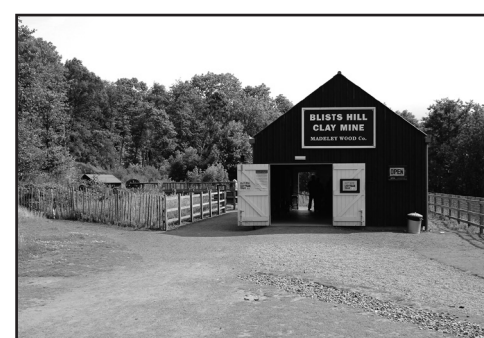
⑤0 Inclined Lift




ACCESSIBLE *

Preferred method of moving between the Upper and Lower Town. Requires a 60m (65 yard) walk along the canal towpath, which can be a little bumpy in places. Check Inclined Lift operation at Reception.

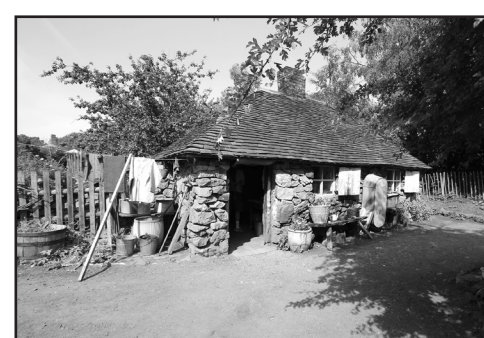
⑤1 Mine Railway Experience



LIMITED ACCESS **

Access good into reception shed, and designated carriages - assistance required for wheelchair users. 

⑤2 Squatter Cottage



LIMITED ACCESS **

Uneven ground from either end, restricted door width into cottage, limited interior space.

The terrain beyond **54** is not suitable for wheelchair users - natural woodland, uneven and boggy in wet weather.

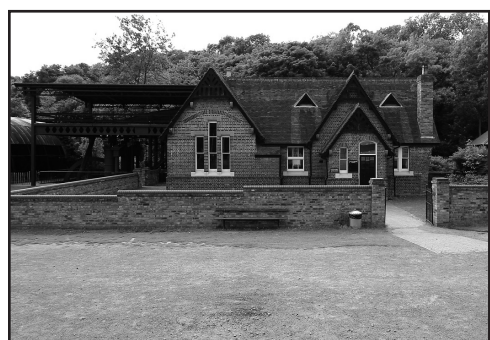
45 Forest Glen Refreshment Pavilion



ACCESSIBLE *

Easy access from shale roadway. Accessible toilets and baby changing facilities.

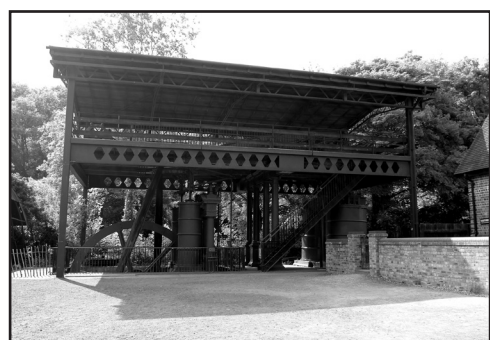
46 Stirchley Board School



ACCESSIBLE *

Good access across playground and via entrance to left side of building up small ramp, limited space for viewing.

47 David & Sampson



VIEW ONLY

Static exhibit, view from roadway.

48 NEW - The Spry Shed



ACCESSIBLE *

Level access from a gravel pathway. Internal accessible lift to mezzanine floor.

48 - NEW, 2 new accessible cover buildings have been built to house the Lower Severn Trow, Ice-Breaker and Trevithick Locomotive (see 30 also).

You are now in the upper town and able to start exploring the exhibits. A horse and cart operates at intervals during the day which may restrict the roadways on occasions, also look out for manure piles!

Upper Town - High Street

2 Bank



ACCESSIBLE *

Choice of access to Bank via 3 steps front entrance or ramp, side entrance.



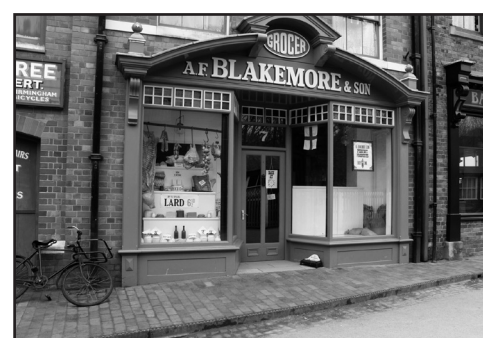
3 Cycle Showroom



NO ACCESS

View only over high stable door from pathway.

4 Grocers



ACCESSIBLE *

Level access to front entrance of Grocers from block pathway.



5 Chemist



DIFFICULT ACCESS ***

Access to front entrance of Chemist by a single step from the block pathway (step rise 7½", 19 cms).



⑥ Goods Shed



ACCESSIBLE *

Access from hard surface roadway onto wooden floorboards.

Upper Town - turn left onto **Canal Street**

⑦ Iron Merchants



NO ACCESS

Window view only from block pathway.

⑧ General Drapers & Outfitters

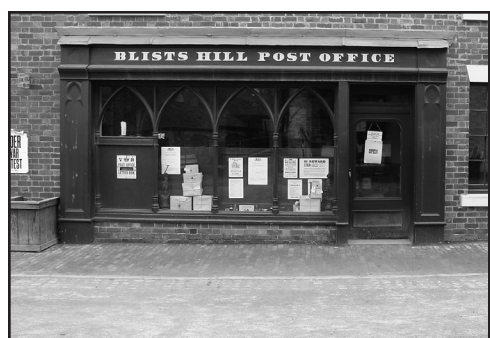


ACCESSIBLE *

Access from block pathway through double doors.



⑨ Post Office & Stationers



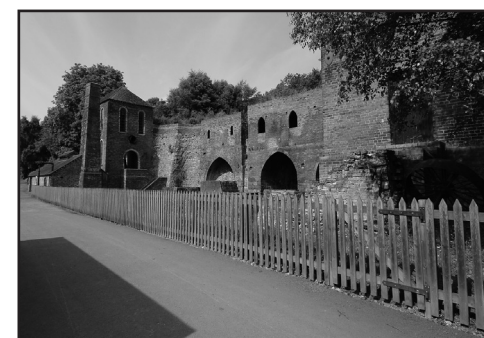
ACCESSIBLE *

Access from block pathway.
Internal lift to first floor exhibition.



Unisex toilets and baby changing in the New Inn Public House.
Nearest accessible toilets are in the Entrance Café (Visitor Centre **1**)
or the Forest Glen Refreshment Pavilion **45** in the Lower Town.

④1 Blast Furnaces



VIEW ONLY

View from pathway.

④2 Ironworks Office



DIFFICULT ACCESS ***

Access difficult due to several stone steps.

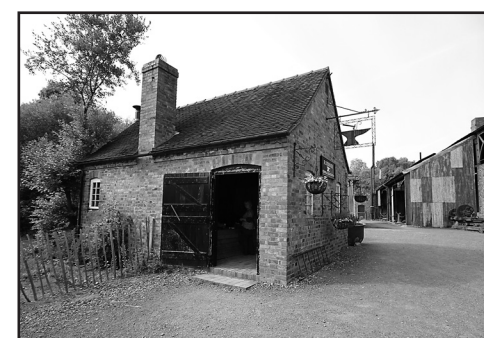
④3 Victorian Fairground



LIMITED ACCESS **

Access good, assess individual suitability for each attraction.

④4 Blacksmiths



ACCESSIBLE *

Level access and exit from rear or small step at exit from front.



Please note: The terrain undulates, meanders and changes frequently in the lower part of the Town.

37 Estate Office



DIFFICULT ACCESS ***

Further down 'Furnace Bank', steep and uneven, access into exhibit from roadway good via second gate.

38 Gospel Car



VIEW ONLY

Viewed from canal towpath.

39 Cottage & Doctor's Surgery



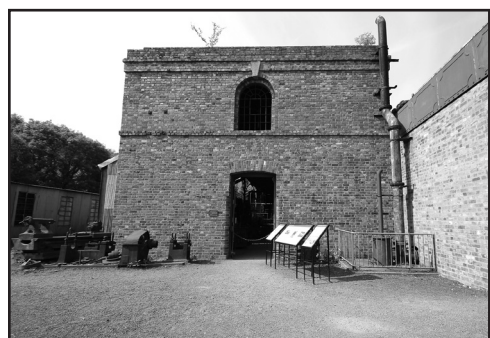
DIFFICULT ACCESS ***

Difficult access due to being further down 'Furnace Bank'. Access into exhibit from roadway good via gate. Two entrances, easy access, limited space within exhibit, floor mats can be an issue.



Lower Town Exhibits

40 Ironworks



VIEW ONLY

Viewed from courtyard.

10 Photographer



ACCESSIBLE *

Level access from block pathway onto a wooden floor.



11 Sweetshop



ACCESSIBLE *

Level access from block pathway onto wooden floor.



12 Victorian Terrace



ACCESSIBLE *

Level access from block pathway onto wooden floor.

13 Fried Fish Dealers



ACCESSIBLE *

Level access from block pathway.



The area between The Fried Fish Dealers **13** and the Cobbler's Shop **14** which leads down to The Foundry **18** is an uneven shale surface and is probably best negotiated with the aid of a helper.

14 Cobbler's Shop



NO ACCESS

View only over stable door from pathway.

Upper Town - turn left back onto **High Street**

15 New Inn Public House Restaurant & Toilets (not Accessible Toilets)



DIFFICULT ACCESS ***

Front corner entrance. Access difficult with single step from pathway (step rise 6", 15cms).



ACCESSIBLE *

Rear entrance and exit off Canal Street. Level Access from roadway to block paved yard with one in ten ramp over 2m, 6.5ft.

Club Room Restaurant only accessible by steep stairway. Fully accessible Café in the Visitor Centre **1**, and Restaurant in the Forest Glen Refreshment Pavilion **45**.

16 Boy's Brigade Hut



ACCESSIBLE *

Level Access from shale roadway. Primarily used for School Groups.

Not open to the general public.

33 Candle Factory



ACCESSIBLE *

Slight downhill access over cobbles through double doors into exhibit.



34 Saw Mill / Undertakers



LIMITED ACCESS **

Difficult access from front of exhibit, easier access via side door to left of exhibit over rough paved area and via ramped step.

35 Harnessmakers



ACCESSIBLE *

Access off roadway, over paved area and small step to enter exhibit. Exhibit has restricted floor space.

36 Bakery



LIMITED ACCESS **

Slightly down 'Furnace Bank', a short ramp into exhibit - smooth access and egress.



WARNING - You are at the top of 'Furnace Bank'. Wheelchair users are advised not to go beyond this point. Alternatively, turn left after the Masons Yard **25** and follow the Canal towpath to the Incline Lift (approx 75 yards) for access to the Lower Part of the Town.

29 Winding Engine



ACCESSIBLE *

Access from shale pathway to exhibit, two entrances, tight 90 degree turn in exhibit and a small step between floorings.



30 NEW - Trevithick, Ice-Breaker and Tub Boat House



ACCESSIBLE *

Level access from a gravel pathway.

31 Brick & Tile Works



DIFFICULT ACCESS ***

Viewed from Town side of canal or over canal bridge, requires climbing a long flight of shallow gradient steps to get close to exhibit.

32 Mine



VIEW ONLY

Viewed from pathway.

The Incline Lift **50** for access to the Lower Part of the Town, is approx 50 yards along the canal towpath from this point.

17 Butchers

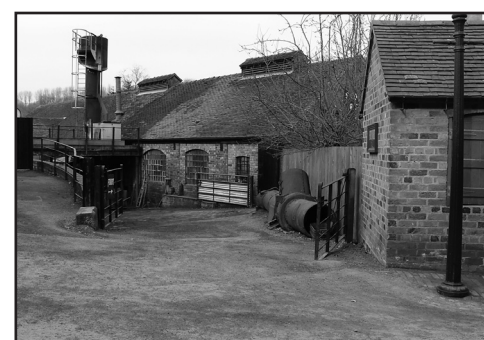


DIFFICULT ACCESS ***

Single step up from pathway. Assistance required for wheelchair users.



18 The Iron Foundry



ACCESSIBLE *

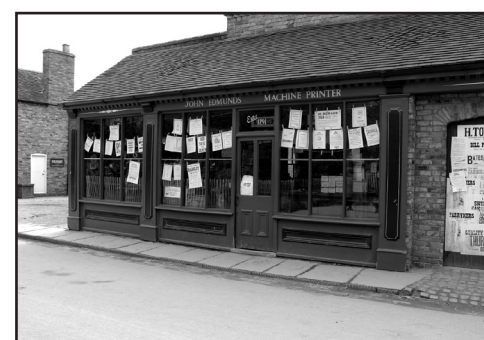
Level Access onto wooden floor boards from shale pathway off Canal Street and Jessie's Fold **19**. Viewing over hand rail, or 'cut-out' glass section in partition wall.

19 Jessie's Fold



Cobbled courtyard. Stable doors usually half open. The stables are used to rest the working horses on site.

20 Printing Shop



ACCESSIBLE *

Access from slab pathway. Small 3" step into shop, or cobbled ramp through double doors.



NOTES:

②1 Plumbers



ACCESSIBLE *

Level access form shale courtyard.

②2 Decorative Plasterers

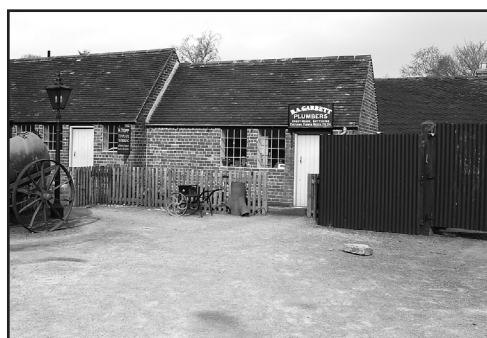


ACCESSIBLE *

Level Access onto wooden floor boards from shale courtyard.



②3 Tinsmiths



ACCESSIBLE *

Level access form shale courtyard.

②4 Machine Shop



ACCESSIBLE *

Double doors with ramp to roadway, with a small 3½" internal step.

②5 Mason's Yard



VIEW ONLY

Wide entrance into cobbled yard.
Mason's Office viewed from outside.

②6 Lee Dingle Plateway Bridge



Original feature of the site. No public access.

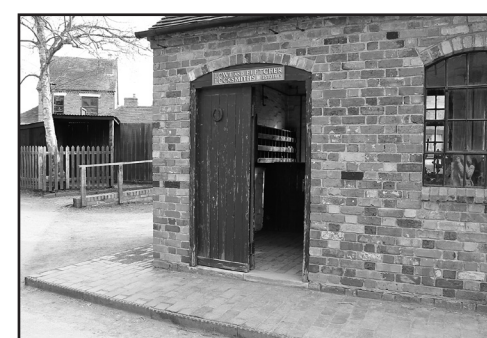
②7 Pleasure Gardens



ACCESSIBLE *

Level access from hard surface roadway onto shale pathways.

②8 Locksmiths



ACCESSIBLE *

Double doors with ramp to roadway, with a small 3½" internal step.

NOTES:

WARNING - Ahead, after the Bakery **36** the land begins to slope steeply (1 in 7 'Furnace Bank'). Wheelchair users are advised not to go beyond this point. Alternatively, turn left after the Masons Yard **25** and follow the Canal Towpath to the Incline Lift 60m approx (50yds).