

A detailed Access Guide to Enginuity



This Guide contains an overview of Access for:

Visitors with physical and sensory disabilities



Assistance Dogs are welcome at all Museum sites.

- The information given in this booklet is a **detailed** guide to **Enginuity**
- **The numerals in the guide refer to individual key areas some of which are also located on the map on the back page.**
- Access Guides to all of the **Ironbridge Gorge Museums** are available free of charge from each reception.

• **Enginuity** is a multi-sensory hands-on interactive science and technology centre housed in the original Engine Shops of the Coalbrookdale Company. Enginuity is on 2 levels, a ground floor and a small mezzanine area. Access to the mezzanine is via an accessible lift.

In Enginuity you can - Generate electricity from flowing water, look at familiar objects with new eyes using the giant x-ray machine, build an earthquake proof tower, challenge our robotic arm to test the speed of your reactions and, join one of our great hands-on fun workshops and watch amazing interactive shows during most school holidays (see the events calendar in our leaflets, on-line or view event posters at the entrance). Enginuity Presenters are free to assist with any general and access questions you may have and can be found either amongst the exhibits and/or at the Manufacturing Desk.

- **The main car park** has a level tarmac surface with 6 designated DDA parking spaces.
- **This guide** follows a natural route around Enginuity, but you may explore Enginuity in any way you wish.
- **The refreshment area** on the ground floor of Enginuity has moveable chairs, is fully accessible and is serviced by vending machines. Visitors are free to use the café facilities, on the ground floor, in the Museum of Iron which has level access. Cross the road outside the Enginuity car park using the zebra crossing and follow the level block paved pathway into the Museum of Iron.

ACCESSIBLE *

- A ramp or incline provide access for all visitors.

LIMITED ACCESS **

- Small steps or uneven surface may limit access for visitors with restricted mobility and access is best achieved with the aid of a helper.

DIFFICULT ACCESS ***

- Large steps and restricted door widths make access difficult for those with restricted mobility and limited access may be achieved with the aid of a helper.



- A Loop system available in the reception area.



- Exhibits in the Enginuity include hand operated interactive exhibits and tactile static objects. The Enginuity Presenters will be more than happy to explain all about Enginuity.



- Assistance Dogs are welcome on site and into all areas.



- **Accessible Toilets** are situated on the ground floor adjacent to the x-ray exhibit.

Rest Stops

Seating is available within the refreshment area on the ground floor underneath the mezzanine area..

① Car Park



ACCESSIBLE ✱

4 designated DDA parking spaces close to the main entrance. Level access from tarmac over a small drainage grill onto a concrete concourse leading to a double glass door entrance.

② Main Entrance and Reception Desk



ACCESSIBLE ✱

Level concrete flooring to reception desk. A lowered area for wheelchair users is around the curved desk heading into the shop area.



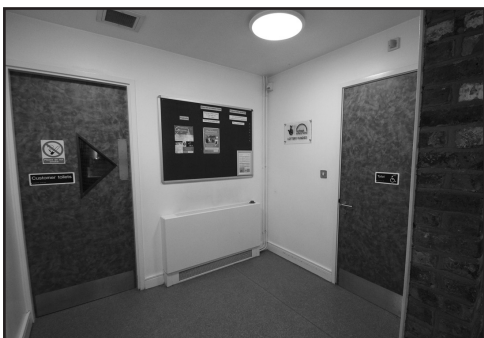
③ Exhibit Entrance



ACCESSIBLE ✱

Access via a swing barrier into Enginuity.

④ Toilets



ACCESSIBLE ✱

Level access to fully accessible toilets and baby changing facilities.

You are free to explore the ground floor of Enginuity any way you wish. The Manufacturing Desk, manned by Enginuity Presenters, is an information point and hands-on activity area.

⑤ Manufacturing Desk



ACCESSIBLE ✱

The Manufacturing Desk is manned by Enginuity Presenters for information and hands-on activities.

⑥ Refreshment Area



ACCESSIBLE ✱

Level access. Removeable chairs and vending machines.



⑦ Accessible Lift to Mezzanine Area



ACCESSIBLE ✱

The accessible lift is located to the rear of the ground floor and can be accessed through the refreshment area.



⑧ Mezzanine Area



ACCESSIBLE ✱

Fab Lab is located on the mezzanina area. This small area is sometimes restricted to all visitors.



Access to the Mezzanine area and Fab Lab is sometimes restricted because of pre-booked workshops.

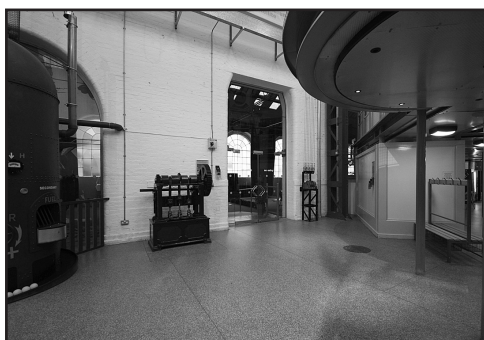
⑨ Gadgetdom



ACCESSIBLE *

Accessed through double doors down a hard surfaced slope onto a level carpet area. This area is used for workshops during school holidays.

⑩ The Engine Shop



ACCESSIBLE *

Accessed through double glass doors down a metal ramp onto a level carpeted area. This area is used for workshops during school holidays.

⑪ Shop and Exit



ACCESSIBLE *

The shop area is accessible either through the designated shop entrance or from the exit route off the ground floor (to the left of the shop entrance).

⑫ Access to Museum of Iron

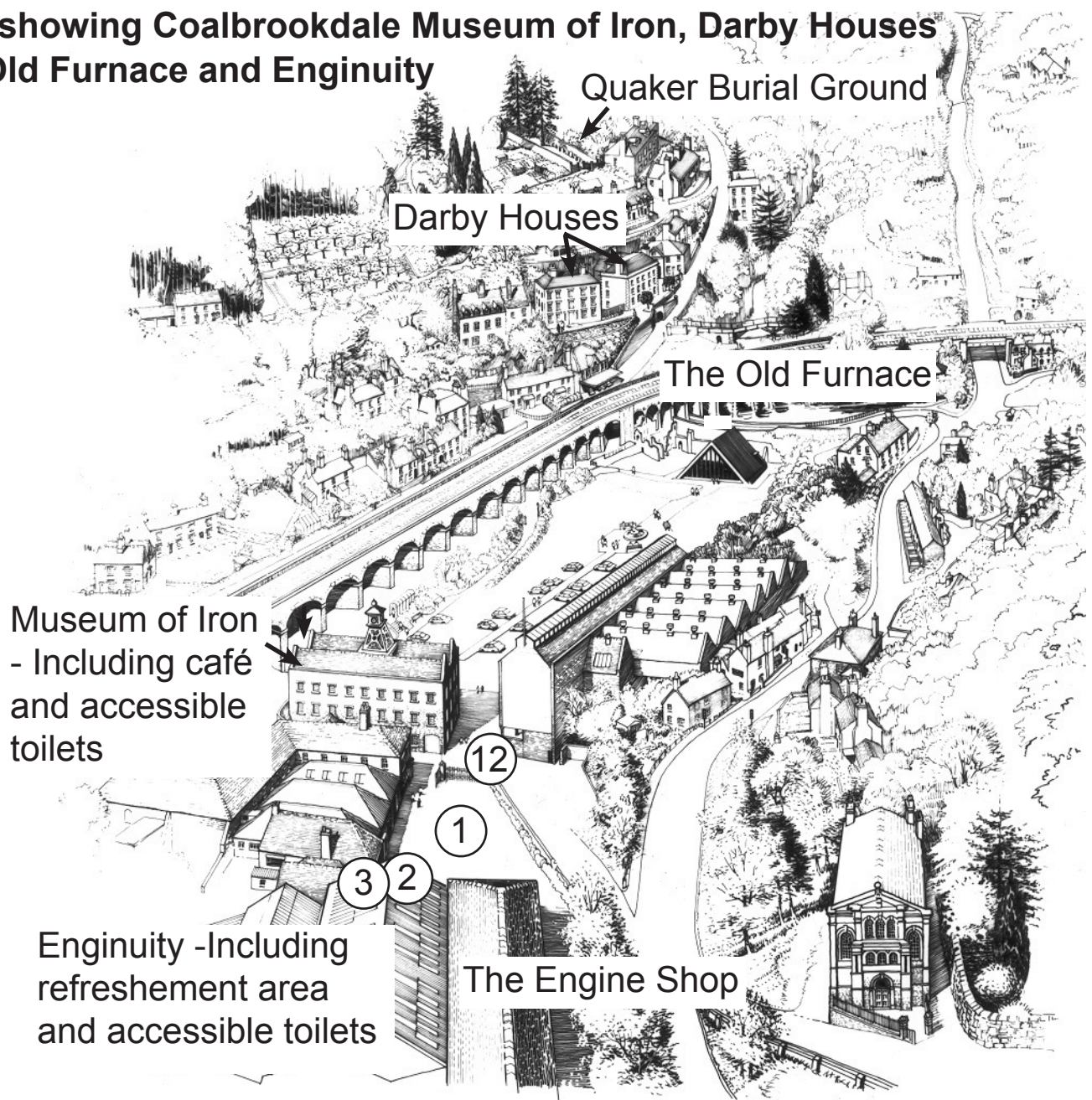


ACCESSIBLE *

Exit Enginuity. Cross the road outside the Enginuity car park using the zebra crossing and follow the level block paved pathway into the Museum of Iron.

The Museum of Iron has café facilities inside the entrance and fully accessible toilets off the car park to the left of the automatic double glass entrance doors. Entry to the café and shop area is free of charge.

Map showing Coalbrookdale Museum of Iron, Darby Houses the Old Furnace and Enginuity



- 1 Car Park
- 2 Main Entrance
- 3 Exhibit Entrance
- 12 Access to Museum of Iron

Pick up separate Access Guides to the **Museum of Iron**, the **Darby Houses** and the **Quaker Burial Ground** from reception at Enginuity or the Museum of Iron. Access to the Quaker Burial Ground is only possible by foot up a steep hill and 3 flights of brick steps and therefore difficult for visitors with restricted mobility. The **Darby Houses** are subject to seasonal opening.

The Ironbridge Gorge Museum Trust is a Charitable Trust

Ref No. 503717-R

ACKNOWLEDGEMENTS

Throughout the compilation of this document the Ironbridge Gorge Museum Trust has had support and assistance from Telford & Wrekin Council.

The Ironbridge Gorge Museum Trust would like to record its thanks to the Telford & Wrekin Readers Group for their helpful suggestions when producing this document.

Customer comments

If you have any comments to make on the Enginuity Access Guide please write them below, or speak to one of the reception staff, thank you.