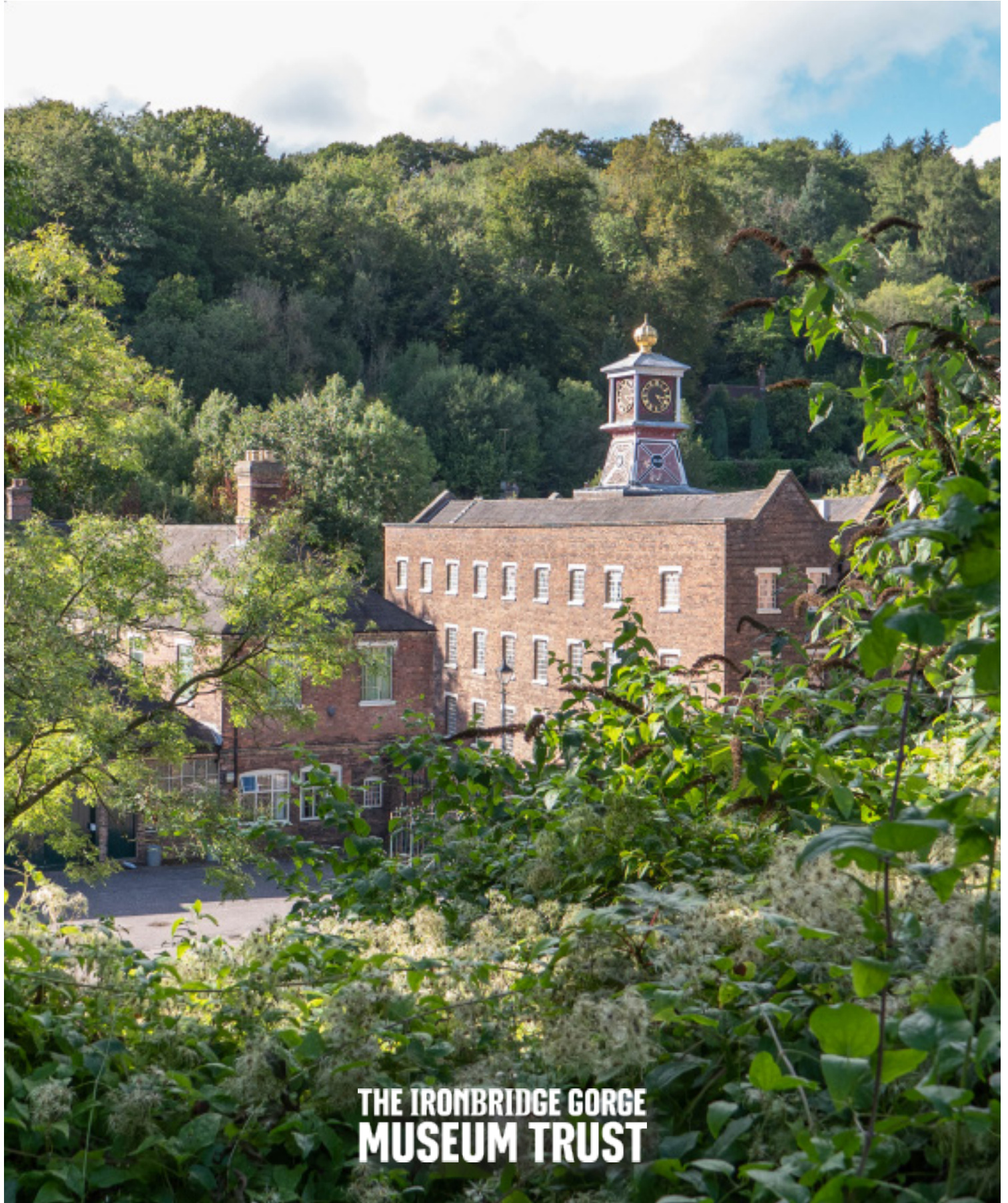


# FILM & TV LOCATIONS



THE IRONBRIDGE GORGE  
MUSEUM TRUST









Coalport China Museum

## WELCOME TO IRONBRIDGE

The Ironbridge Gorge Museum Trust is the custodian of more than 35 listed buildings and scheduled monuments, situated throughout the world famous Ironbridge Gorge World Heritage Site.

These unique buildings collectively tell the story of the Industrial Revolution, and present themselves as the ideal setting for film and TV productions.



Broseley Pipeworks



Blists Hill Victorian Town  
Canal Street

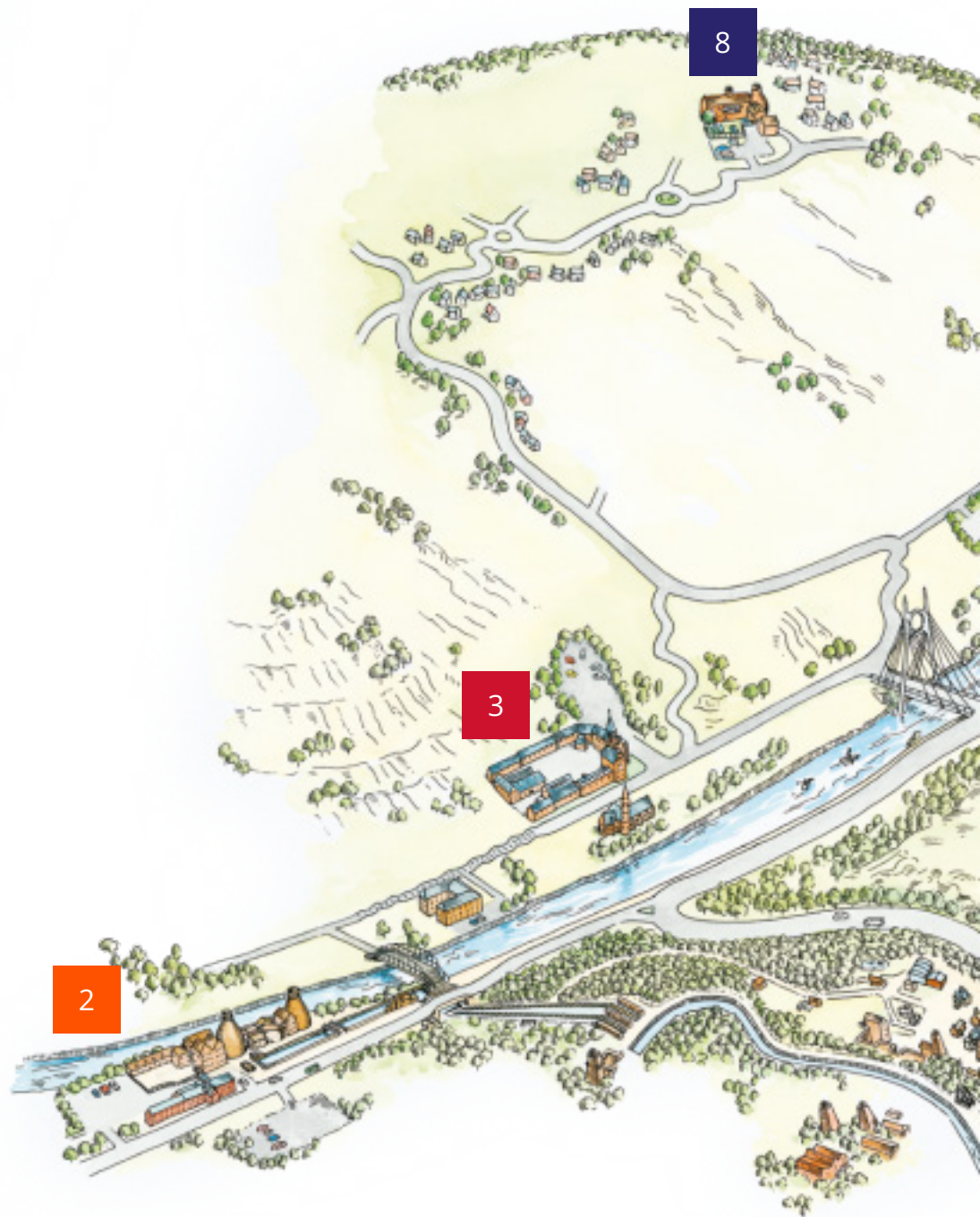


The Iron Bridge Tollhouse

## OUR CENTRAL LOCATION

On the outskirts of Telford, Shropshire, we are just under an hours drive from Birmingham, and halfway between London and Manchester.

With excellent road and rail connections, the Gorge is easily accessible from all parts of the country.



1

## BLISTS HILL VICTORIAN TOWN

Legges Way, Telford, TF8 7DQ

4-27

A reconstructed Victorian town, consisting of more than 45 historic buildings, set in 52 acres of the Shropshire countryside.

2

## COALPORT CHINA MUSEUM

High Street, Coalport, TF8 7HT

28-31

An historic centre of china manufacture, with two huge brick built kilns and a number of quaint artisan workshops.

3

## JACKFIELD TILE MUSEUM

Salhouse Rd, Jackfield, TF8 7LJ

32-35

A tile factory and museum. Complete with workshops, period offices and galleries, Jackfield is a gem beside the river.

4

## IRON BRIDGE & TOLLHOUSE

Hodge Bower, Ironbridge, TF8 7JP

36

The world's first Iron Bridge, and it's accompanying tollhouse proudly span the River Sever at the foot of a small town.





5

## MUSEUM OF THE GORGE

The Wharfage, Ironbridge, TF8 7NH

37

A castellated warehouse formerly used by the Coalbrookdale Company to store goods before shipping.

6

## COALBROOKDALE MUSEUM OF IRON

Coach Road, Coalbrookdale, TF8 7DQ

38-45

A collection of historic industrial buildings nestled amongst forested hills; the birthplace of the Industrial Revolution.

7

## DARBY HOUSES

Darby Rd, Coalbrookdale, TF8 7EW

46-51

The former 18th century homes of Coalbrookdale's Quaker Iron Masters. These period properties sit on the hillside overlooking the ironworks in the valley below.

8

## BROSELEY PIPEWORKS

Duke St, Broseley, TF12 5LX

52-53

A curious factory abandoned in 1957, the pipeworks was home to a world famous tobacco pipe brand.





Canal Street

## Blists Hill Victorian Town

Legges Way, Telford, TF7 5UD

Blists Hill Victorian Town is a reconstructed period town set in 52 acres of the Shropshire countryside.

The town consists of more than 40 buildings, both original and newly constructed, each one telling a part of the story of the Industrial Revolution, and life in Victorian times.

The buildings are arranged in streets and come together to create a convincing Victorian Town.

Many of the buildings are complete with furnished interiors and historic collections.

Several of the industrial buildings on site contain original equipment which is still in full working order. Our Foundry, Blacksmith's, Winding Engine and Trevithick Locomotive all operate regularly.

Our costume department have access to, and can produce, a wide array of period costumes using their in depth knowledge of historic clothing.



Candle Factory



The Ironworks





The Foundry



The Chip Shop



Doctor's Cottage







## Blists Hill Victorian Town

### Goods Shed

Built in the style of a Victorian railway warehouse, the Goods Shed sports a single cavernous space, accessible by a large door to the front. These doors facilitate the easy movement of props in and out of the space. The Goods Shed neighbours the Boys Brigade hut and sits opposite the bank.



1500 ft<sup>2</sup>



Furnished



Nearby



1900



Available



Copy



## Blists Hill Victorian Town

### Lloyds Bank

Based on the former Lloyds Bank in the nearby village of Broseley, our bank offers an authentic setting for a period transactional scene. Sporting an extravagant spiral staircase, traditional counter and imposing exterior, this building is typical of a bank in the early 19th Century.



700 ft<sup>2</sup>



Furnished



Nearby



1799



Available



Copy





Blists Hill Victorian Town

Cycle Showroom

The cycle showroom displays a traditional workshop frontage, and contains a collection of intriguing bicycles from the Victorian period.

	180 ft <sup>2</sup>		Furnished
	Nearby		1890
	Nearby		Copy



Blists Hill Victorian Town

Grocer's

The Grocer's sports a traditional shop frontage, with a large counter spanning the interior and cabinets lining the walls. The window provides ample space to display a variety of goods and the neighbouring buildings complete the street like feel.

	500 ft <sup>2</sup>		Furnished
	Nearby		1890
	Available		Copy





## Blists Hill Victorian Town

### Chemist's

The Chemist's spans the corner of our two largest shopping streets, its painted sign acting as a focal point for those rounding the corner. It's interior contains a number of counters, cabinets and display cases alongside a Victorian dentist's chair.



1000 ft<sup>2</sup>



Furnished



Available



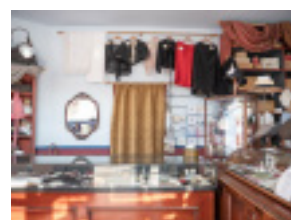
1890



Available



Copy



## Blists Hill Victorian Town

### Draper's

Centred along Canal Street, the Draper's resides in the heart of the town's shopping district. The single room downstairs displays period costumes and is fitted with traditional retail counters. The upper floors are occupied by our costume department.



500 ft<sup>2</sup>



Furnished



Available



1880

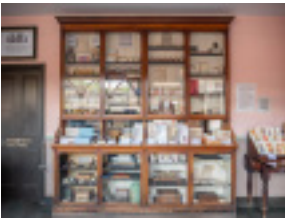


Available



Copy





Blists Hill Victorian Town Post Office

The Post Office consists of two rooms downstairs, the shop and a sitting room/sorting office. The upper floor is home to the 'Museum of the Post Office in The Community', a modern exhibition displaying a variety of postal service equipment.

	900 ft <sup>2</sup>		Furnished
	Available		1840
	Available		Copy



Blists Hill Victorian Town Photographer's

A small house and traditional photographic studio, containing a painted backdrop and equipment of the time. Framed Victorian images line the walls and original furniture populates the floor space.

	900 ft <sup>2</sup>		Furnished
	Available		1790 & 1900
	Available		Copy





Blists Hill Victorian Town

Sweet Shop

The frontage of the Sweet Shop is adorned with a large confectioners display window, traditional shop sign and wooden front door. A large retail space lies beyond the front door, with a counter spanning it's width and cabinets lining the walls.

	400 ft²		Furnished
	Available		1860
	Available		Copy



Blists Hill Victorian Town

Wash House

Hidden away behind the buildings of Canal Street, the Wash House offers a glimpse of Victorian domestic life. A variety of manual washing equipment is contained within and the building is fronted by a small allotment or herb garden.

	250 ft²		Furnished
	Unavailable		1860
	Unavailable		Copy





## Blists Hill Victorian Town

### Chip Shop

A large shop front with a waiting room and service room within. The building is furnished with fireplaces, benches and the all-important fish fryer! To the rear of the building are a number of modern food preparation and administrative rooms.



600 ft<sup>2</sup>



Furnished



Available



1860



Available



Copy



## Blists Hill Victorian Town

### New Inn Public House

A traditional public house, with a drinking bar, tap room, private lounge and beer garden to the rear. The first floor is home to a private function room which is complete with period furnishings, including a fireplace, tables and service bar.



2000 ft<sup>2</sup>



Furnished



Available



1870



Available



Copy





Blists Hill Victorian Town

Butcher's

The Butcher's consists of a single room downstairs with counters on two sides and plenty of room for window displays. The side elevation is adorned with a painted sign, adding character to both the building and the street.

	350 ft <sup>2</sup>		Furnished
	Available		1850
	Available		Relocated



Blists Hill Victorian Town

Iron Foundry

The Foundry is one of the largest buildings in the centre of the town, and still operates once a week. Here, iron is melted and poured into moulds, forming cast iron. Our skilled team will be happy to speak to you about the process in more detail, upon request.

	2500 ft <sup>2</sup>		NA
	Nearby		1870
	Available		Original





Blists Hill Victorian Town

Sawmill Courtyard

A traditional courtyard containing a Jobmaster's office, a logging shed and storage shed for several historic carts. The courtyard is bordered by the Sawmill and adjacent to the Bakery.

	3750 ft <sup>2</sup>		NA
	Available		1900
	Nearby		Relocated



Blists Hill Victorian Town

Printer & Stationer's

With an original shop front and windows all around, this light filled building contains a number of traditional printing presses and stationary equipment. A counter provides a natural barrier between the retail and operations spaces.

	550 ft <sup>2</sup>		Furnished
	Available		1900
	Available		Inspired





## Blists Hill Victorian Town

## Coalport Works

The Coalport Works is a long, narrow building consisting of two fair sized rooms. Sparsely furnished, this building is a blank canvas, perfect for many uses.



750 ft<sup>2</sup>



Unfurnished



Available



1880



Available



Inspired



## Blists Hill Victorian Town

## Plasterer's

A single room filled to the brim with slip casting equipment, the Plasterer's is a cosy and atmospheric artisan's workshop. Neighbouring the Coalport Works, this compound is a centre of historic crafts.



280 ft<sup>2</sup>



Furnished



Available



1900



Available



Inspired





## Blists Hill Victorian Town

### Machine Shop

The machine shop is nestled amongst a number of other buildings, and is found at the end of a narrow brick lined alley. The workshop is filled with machine tools, lathes, drills and steam engines.



1400 ft<sup>2</sup>



Furnished



Nearby



1870



Available



Original



## Blists Hill Victorian Town

### Locksmith's

These brick walls contain a single room which displays a Locksmith's workshop of the late 19th Century. The building stands alone beside the thoroughfare towards the lower part of the town and is complete with windows on either side.



250 ft<sup>2</sup>



Furnished



Nearby



1890



Nearby



Inspired





Blists Hill Victorian Town

Winding Engine

Still in working order, the winding engine would have moved workers up and down the mine shaft which neighbours these huts. The exterior is fronted by a coal store and resides beside the Coalport Works.

	700 ft²		Unfurnished
	Available		1850
	Available		Mixed



Blists Hill Victorian Town

Trevithick Locomotive

Our Trevithick replica is based on Richard Trevithick's original design for what was the world's first steam locomotive, pre-dating Stephenson's Rocket by 27 years. This replica is in full working order and regularly runs along the 65 metre track which lines the Canal.

	65 Metre Track		NA
	Unavailable		1802
	Unavailable		Replica





### Blists Hill Victorian Town

### Brick & Tile Works

One of the original features of the site, the Brick & Tile Works is an imposing structure at the edge of the town. It is fronted by the Trevithick track and the canal, and overlooks the main section of the town.



	4500 ft <sup>2</sup>		Unfurnished
	Unavailable		1870
	Unavailable		Original



### Blists Hill Victorian Town

### Mine Pit Head

The mine pit head is typical of that found in a traditional mining town. The neighbouring Winding Engine sheds contain the equipment necessary to move workers up and down this surviving shaft, much of it still in working order.



	NA		NA
	Nearby		1850
	Nearby		Replica





## Blists Hill Victorian Town

### Candle Factory

One of the most intriguing buildings on site, the Candle Factory sports a single room filled with original candle making equipment. The building is fronted by a large courtyard and shoulders a small stable, the rear of the building features a small leather working shop.



700 ft<sup>2</sup>



Furnished



Nearby



1800



Available



Relocated



## Blists Hill Victorian Town

### Sawmill

The Sawmill offers a vast timber framed interior, with all of the tools and equipment that you would expect to find in a carpenter's workshop.

The building can be accessed from the front, rear and side elevations and opens out into it's courtyard and the street, Furnace Bank.



1200 ft<sup>2</sup>



Furnished



Nearby



1850



Available



Relocated





Blists Hill Victorian Town

Bakery

The Bakery sits on a pedestal raised slightly above the street. It consists of two rooms downstairs; a retail space and a food preparation and baking area. The two antique ovens are operational and used frequently, though they have been converted to electricity.

	750 ft <sup>2</sup>		Furnished
	Available		1850
	Available		Copy



Blists Hill Victorian Town

Estates Office

The Estates Office has a varied history; it's been used as a family home, a farmhouse and a pub. As such, the building contains a multitude of characterful features, including period offices, fire places and original timbers.

	1200 ft <sup>2</sup>		Furnished
	Available		1600
	Available		Relocated





Blists Hill Victorian Town

Doctor's Cottage

This cottage features a small lounge and kitchen to the front, and a Doctor's office and waiting room to the rear. The house is surrounded by beautiful gardens and has a lovely, homely feel. The surgery area can be accessed internally, or via it's own dedicated entrance in the garden.

	750 ft²		Furnished
	Available		1862
	Available		Relocated



Blists Hill Victorian Town

Ironworks

Originally from Woolwich Dockyard, the Ironworks building was relocated to the museum in 1974. The equipment within is still operational, but rarely runs due to the huge resources needed to heat the furnaces and kick-start production.

	12,000 ft²		NA
	Available		1815 - 1860s
	Available		Relocated











Blists Hill Victorian Town

Ironworks Offices

This period block features a number of traditional office cubicles on the ground floor, and is divided into two by a vaulted passage in the centre. The upper floors contain a number of modern rooms, which could be used as a production office or equipment store.



	900 ft <sup>2</sup>		Furnished
	Available		1880
	Available		Inspired



Blists Hill Victorian Town

Blast Furnaces

One of the largest original features of the site, the Blast Furnaces are a scheduled ancient monument. Embedded in the hillside, they can be viewed from above and below, making an excellent backdrop from any angle.

	24,500 ft <sup>2</sup>		NA
	Unavailable		1832 - 1844
	Unavailable		Original





## Blists Hill Victorian Town

## Blacksmith's

The operational Blacksmith's Forge is situated between the Ironworks and the School. Inside, an array of period equipment tells the story of the metal working industry in the late 19th century.



500 ft<sup>2</sup>



Furnished



Nearby



1890



Available



Inspired



## Blists Hill Victorian Town

## Forest Glen Refreshment Pavilion

Operated by our internal catering team, the Forest Glen is one of our largest food outlets. With seating for up to one hundred covers, this beautiful building could not only act as a wonderful period set, but also feed your cast and crew.



4300 ft<sup>2</sup>



Furnished



Available



1889



Available



Relocated





Blists Hill Victorian Town School

With two large, furnished, teaching rooms, the School offers the perfect setting for period educational scenes. The building is surrounded by a perimeter brick wall, which encloses a playing area.

	1500 ft <sup>2</sup>		Furnished
	Nearby		1881
	Available		Relocated



Blists Hill Victorian Town Mine Railway

The wooden clad Mine Railway shed is an example of a typical light construction industrial building of the Victorian period. It's interior is sparsely furnished and could be easily dressed to meet your specific needs.

	600 ft <sup>2</sup>		NA
	Unavailable		1880
	Unavailable		Inspired



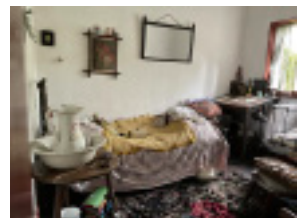


## Blists Hill Victorian Town

### Squatter's Cottage

Reconstructed from the remains of a Squatter's Cottage found in the nearby town of Little Dawley, this building offers an authentic setting for poor working class people around 1900. With only a few small windows, the cottage is a low light environment.

	420 ft <sup>2</sup>		Furnished
	Unavailable		1825-1841
	Unavailable		Relocated



## Blists Hill Victorian Town

### Toll House

The Toll House is presented as a typical working class home. Designed by Thomas Telford, the single level dwelling consists of three rooms; a bedroom, living room and kitchen. The grounds of the cottage incorporate a small garden, animal enclosure and courtyard.

	750 ft <sup>2</sup>		Furnished
	Unavailable		1829
	Available		Relocated





Blists Hill Victorian Town

Mission Church

The Mission Church sits alone in an isolated portion of woodland, a small mock burial site featuring iron headstones lies at it's side. The interior is furnished with pews, a small organ, a lectern and other items consistent with a church of the period.

	500 ft²		Furnished
	Nearby		1896
	Nearby		Relocated



Blists Hill Victorian Town

Inclined Lift

The Inclined Lift offers the ability to move people and goods between the upper and lower portions of the town. It is designed in a style sympathetic to the early Victorian period, and it offers splendid views of the town from above.

	40 Metre Track		NA
	Unavailable		NA
	Unavailable		Inspired



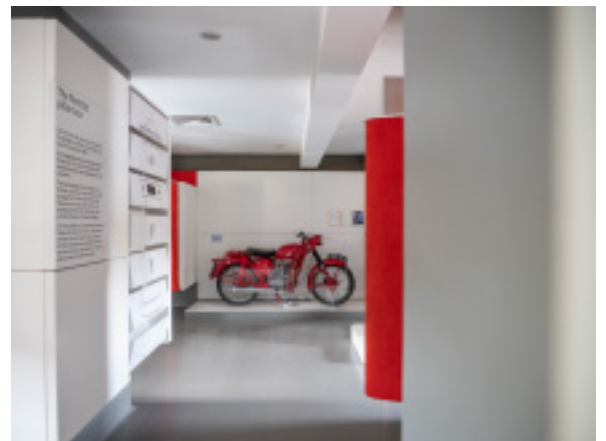


- ▲ Madeley Wood Co. Outdoor Adventure
- ◀ The Terrace - Front Room



An interior view of the Post Office ▲

A Steam Engine inside the Machine Shop ▶



- ▲ Museum of The Post Office in the Community
- ◀ The Terrace - Back Room





Visitor Entrance Chimney ▲

Canal Street ►



▲ Madeley Wood Co. Outdoor Adventure

◀ The Iron Merchants, a facade amongst the buildings of Canal



David & Sampson Blowing Engine ▲

View of The Foundry from High Street ►







Bottle Kiln Viewed From Canal side Walk

## Coalport China Museum

High Street, Telford, TF8 7HT

A former centre of china production, the buildings of the museum tell the tale of this historic industry.

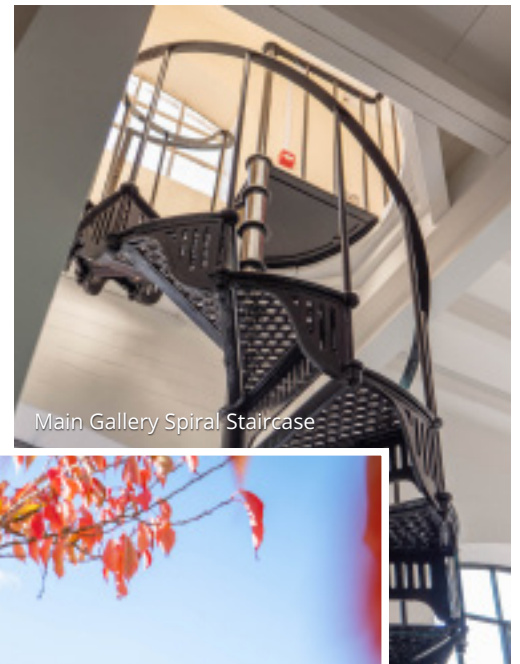
With two spectacular bottle kilns, numerous workshops and a multitude of galleries, Coalport offers a variety of options for both filming and photography.

The former factory complex is nestled amongst beautiful scenery and is flanked by both a canal and the River Severn.

It's internal courtyards sport cobbled streets, quaint buildings and a few industrial ruins.

On-site facilities include parking for over 100 vehicles, toilets and a third party cafe.

The nearby Hay Inclined Plane, a scheduled ancient monument, links our Coalport Site with Blists Hill Victorian Town.



Main Gallery Spiral Staircase



Coalport China Museum - Car Park View





## Coalport China Museum

## Museum Galleries

The galleries at Coalport span two floors, and display a variety of items connected to British china production and trade. The collection includes examples of Coalport & Caughley China, from elaborate vases to hand painted figures.



## Coalport China Museum

## Bottle Kilns

Perhaps the most iconic elements of the Coalport works, the Bottle Kilns were used to fire the china and pottery produced here. Both kilns are easily accessible, with space to walk inside and marvel at their spectacular construction.



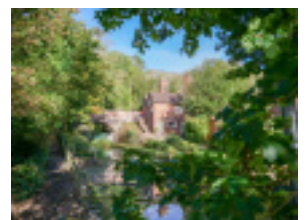
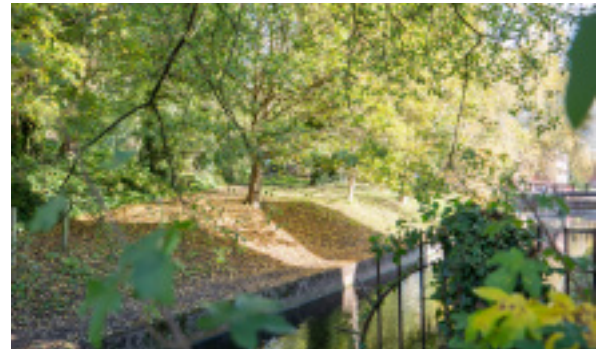




## Coalport China Museum

## Canal Side Walk

The beautiful canal side walk through our Coalport site runs parallel with the River Severn and offers a peaceful and tranquil escape from everyday life. Bathed in beautiful sunlight in the morning, and gentle shade in the afternoon, this is the perfect spot for an outdoors shot!



## Coalport China Museum

## Hay Inclined Plane

The Hay Inclined Plane formerly linked the higher canal at Blists Hill Victorian Town with the lower canal at Coalport, thereby enabling goods to be transported directly to the River Severn. Tub boats would have been transported up and down the hillside in wheeled cradles, which ran on iron rails.







## Coalport China Museum

## Saggar Maker's Workshop

One of the most popular workshops in the museum, the Saggar Maker's is a wonderfully cosy environment, filled with the tools of this traditional trade. With several large windows, this workshop feels spacious and is flooded with light.



## Coalport China Museum

## Long Workshop

The Long Workshop runs the entire length of the main museum buildings, and then a little more. Inside, there are several distinct bays, each one given over to a different production process or display area. Lined with windows on both sides, this is a wonderful building for filming activities.







Jackfield Tile Museum Entrance

## Jackfield Tile Museum

Salhouse Road, Telford, TF8 7LJ

A former Victorian tile factory turned museum, with a variety of galleries, workshops and tiled period settings; Jackfield is one of our hidden gems.

Overlooking the River Severn, just across from Coalport, the tile museum's tranquil setting makes not only a pleasant setting but also a practical one. With easy access and a low chance of disruption, this is one of our most coveted locations outside of Blists Hill Victorian Town.

Stunning from the outside, and captivating from the inside, Jackfield never fails to disappoint.

It's exquisite galleries, intriguing tiled period setting and traditional offices make Jackfield a compelling offer for location managers seeking unique but authentic settings.

With on site parking, catering and production facilities, everything you need is at hand.



The Style Gallery Exterior



Jackfield Works

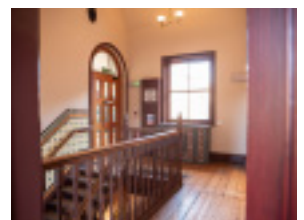
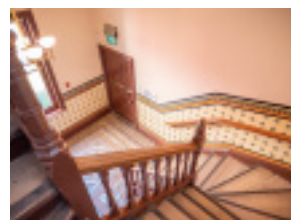
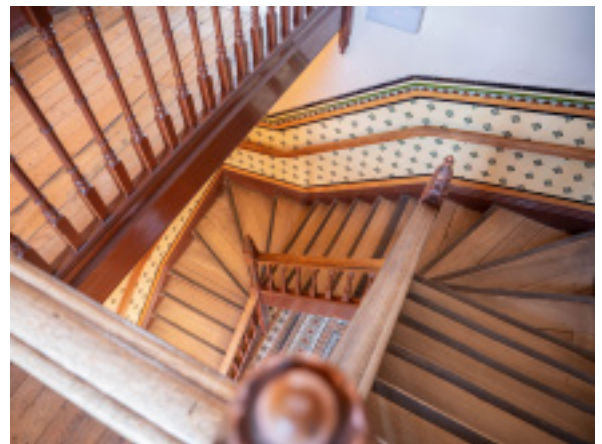




## Jackfield Tile Museum

### Peacock Cafe

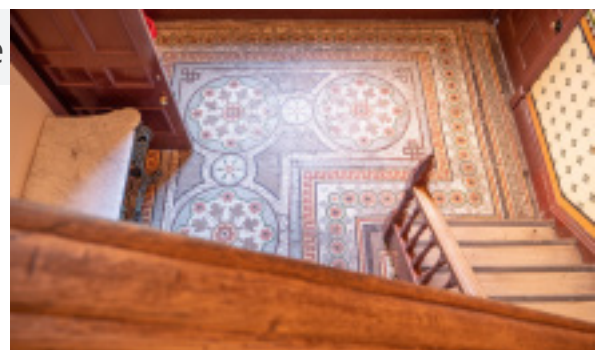
The art-deco styled 'Peacock Cafe' offers a warm welcome to the museum. The unique styling of this space makes it an attractive offering for productions looking for such a space. It's not only beautiful, but also functional, capable of catering for large cast & crews.



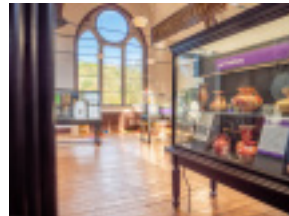
## Jackfield Tile Museum

### Craven Dunnill Entrance

The original entrance to the Craven Dunnill works, this grand staircase sports a beautiful tiled border and dark wooden construction. Terminating on a large landing, this entrance offers easy access to the galleries and is surrounded by windows providing great views over the courtyard.



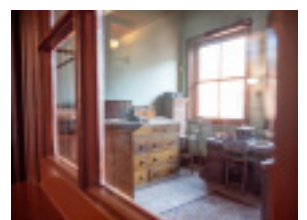
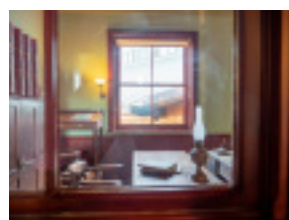
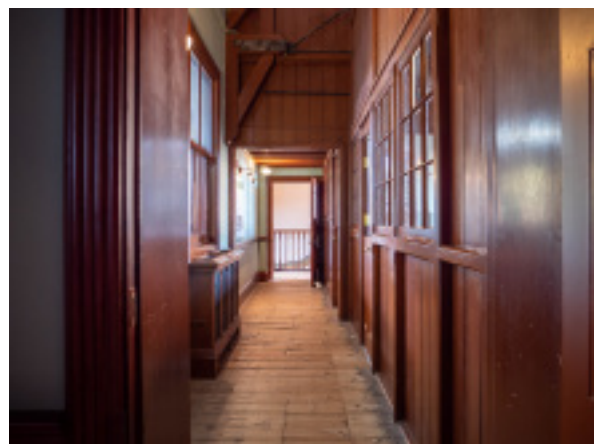




## Jackfield Tile Museum

### Museum Galleries

With four sizable galleries, each of different styles, Jackfield offers a number of options for productions wishing to shoot in a traditional museum space. With views over the River Severn, into the factory's courtyard, and into the tile vault, every option is a good one.



## Jackfield Tile Museum

### Period Offices

The original offices of the managers at the Craven Dunnill works, still furnished with their antique possessions, furniture and business papers, are about as authentic as one can find. With several private offices leading off from a single wood panelled corridor, you'll be spoilt for choice.







## Jackfield Tile Museum

## Tiled Period Settings

The museum contains a number of tiled 'period settings', recreations of environments in which Craven Dunnill tiles were used, and might still be found. These include; a pub bar, a 1930s living room, butcher's, tube station, chapel, public washroom and hospital corridor.



## Jackfield Tile Museum

## Fusion Building

The most recent addition to our Jackfield site stands on the footprint of a former workshop. The Fusion Centre incorporates several artisan workshops, inhabited by local artists and craftspeople. Overlooking the modern atrium is the Footprint Gallery







The Ironbridge - North Bank View

## The Iron Bridge & Tollhouse

Bower Yard, Telford, TF8 7JP

The world famous Iron Bridge spans the River Severn at the foot of the town which takes it's name. The accompanying Tollhouse once sought payment from those who traversed the bridge, but now displays information about the design and construction of this engineering marvel, in a free exhibit.

The two rooms on the uppermost floors of the Tollhouse are largely a blank canvas, and would be suitable for temporary re-purposing as a set.

The bridge provides fabulous views over the River Severn, and is complemented by the beautiful backdrop of the industrial town of Ironbridge.

The Tollhouse sits on the southern side of the Iron Bridge, one of only a few buildings on this side of the river.

With four rooms in total the Tollhouse would have provided generous living space for the occupier at the time it was constructed.



The Iron Bridge - South Bank View



The Iron Bridge Tollhouse





Museum Of The Gorge - View From Severn South Bank

## Museum Of The Gorge

The Wharfage, Telford, TF8 7NH

Constructed in 1834 by the Coalbrookdale Company, The Severn Warehouse, now known as the Museum of The Gorge, has had a diverse history.

Initially constructed to store goods bound for transit via the Severn, this building has seen many uses through the years; from a garage to a water bottling plant, and now a museum!

Internally, the museum sports a large shop, small cinema room, gallery and 'The Lady Chapel' a church-like room at the front of the building

The Severn Warehouse has flooded many times over the years, and is expected to continue to do so in the years to come.

This iconic building will be familiar to visitors to the Gorge, as it can be seen from many vantage points on the hills which surround the town, and from the Iron Bridge itself.



The Lady Chapel



View from The Museum of The Gorge





Coalbrookdale Site - View From Darby Road

## Coalbrookdale Site

Coach Road, Telford, TF8 7DQ

Coalbrookdale has been a site of significant transformation over the last few centuries. Originally a forested valley, the dale was exploited for its natural resources and geography, with ironworks rising from the ground on a scale never seen before.

It was here that Abraham Darby I successfully made cast iron using coke instead of charcoal, changing the course of the iron industry and paving the way for the industrial revolution.

The site encompasses a number of former Industrial Buildings, built and used by the Coalbrookdale Company in the 19th Century.

The Great Warehouse, which now houses the Museum of Iron, takes centre stage. It is neighboured by The Long Warehouse, The Head Offices, The Covered Bays and Enginuity.

The museum grounds add further character to the site, with a beautiful fountain, several ruins and Darby's original 'Old Furnace' at the far end.



Boy & Swan Fountain



The Viaduct







## Coalbrookdale Site

## Museum Of Iron

The Museum of Iron spans the three floors of the Coalbrookdale Company's 'Great Warehouse'. This building, the centre piece of the site, once stored all of the finished products that had been cast at the furnaces.



## Coalbrookdale Site

## The Long Warehouse

An extravagant brick built warehouse stretching to almost 70 metres in length, and raised above the ground by a series of huge cast iron pillars, the Long Warehouse is a marvellous relic of the Coalbrookdale Company's operations.







## Coalbrookdale Site

## Head Office

This building once contained the management and operation offices of the Coalbrookdale Company, and is now home to the museum's equivalents. Having evolved over time, the building is scarred by previous additions, modifications and extensions, long since lost to time.



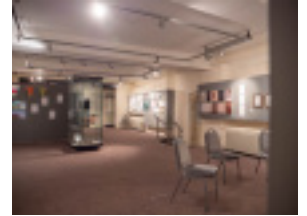
## Coalbrookdale Site

## Engine

Our design and technology museum contains a whole host of awe-inspiring machines and mechanisms, and aims to inspire children to learn more about invention and innovation through discovery and play.



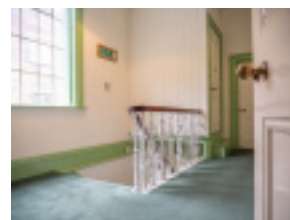




## Coalbrookdale Site

## Coalbrookdale Gallery

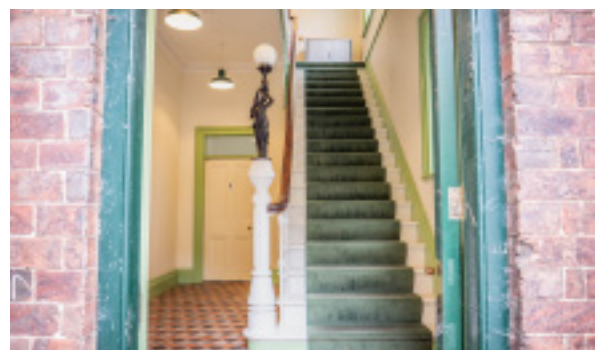
One of our quietest and most secluded galleries, the Coalbrookdale Gallery resides within our Head Office building. Showing temporary, travelling and exclusive exhibitions, this is a highly customisable space which can be easily sculpted to suit your needs.



## Coalbrookdale Site

## Executive Stairway

Once the entrance used by the Coalbrookdale Company's most senior managers and iron masters, this grand entrance now sees little use. Pristinely preserved, and expertly cared for, this entrance presents the perfect option for crews looking to film big entrances in a discreet fashion.



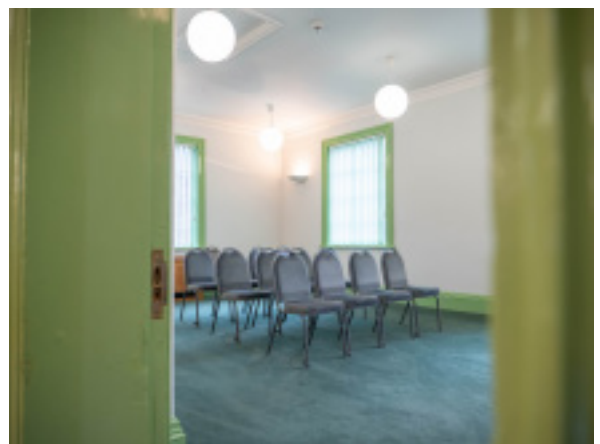
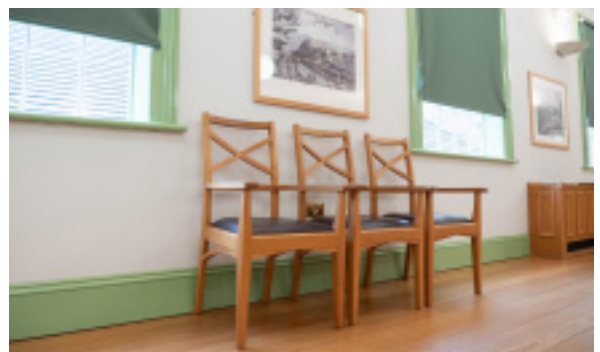




## Coalbrookdale Site

### The Board Room

A large, executive style suite, perfect for meetings, presentations and conferences. A largely blank canvas, the room features excellent views of the Museum of Iron and Ingenuity, through it's many windows. The rooms' double doors open to reveal an original fireplace at the far end.



## Coalbrookdale Site

### Members Room

Leading on from the Board Room, the Members room is a more modest affair. It's windows still afford excellent views of the Museum of Iron, and the décor is a perfect match to it's larger sibling.







## Coalbrookdale Site

## The Covered Bays

A storage space for the goods and wares of the Coalbrookdale Company. The large wooden doors open out onto the car park, whilst the cobbled floor and vaulted ceiling impress all those who stand inside.



## Coalbrookdale Site

## The Glass Classroom

Neighbouring the Covered Bays, the Glass Classroom offers a more refined environment, with carpet, efficient heating and dedicated toilets. The glass partition can be covered with a curtain, or exposed to flood the space with light, when the bay doors are opened.



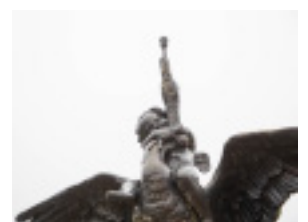




## Coalbrookdale Site

## The Engine Shop

A vast, cavernous room, once used for the assembly of some of the Coalbrookdale Company's largest components. With a vaulted timber framed ceiling and large industrial windows, this space is perfect for many applications.



## Coalbrookdale Site

## Boy & Swan Fountain

This cast iron sculpture is the centre piece of the museum's grounds. Still in working order, it is a beautiful focal point and lends a cosmopolitan feel to the grounds. The fountain was designed by the famous sculptor John Bell, and displayed at the Great Exhibition of 1851.







## Coalbrookdale Site

## The Old Furnace

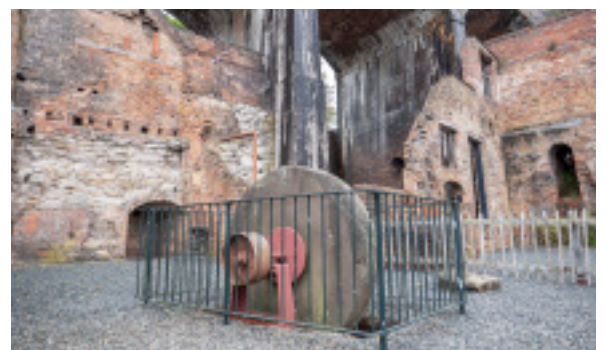
The original furnace used by Abraham Darby in 1709 to refine the iron making process; using coke instead of charcoal to fuel the smelting process – kickstarting the Industrial Revolution. This scheduled ancient monument is covered by a protective structure.



## Coalbrookdale Site

## Museum Grounds

The museum and associated buildings occupy an expansive site in the centre of Coalbrookdale. Within the grounds are several ruins, gardens and car parks. The site is bordered on one side by a Victorian viaduct, which is still capable of carrying trains to this day.







Rosehill House

## The Darby Houses

Darby Road, Telford, TF8 7DQ

The former homes of Coalbrookdale's Quaker iron masters, the Darby Houses sit on the hillside overlooking the former ironworks complex below.

Surrounded by beautiful wooded countryside and quaint industrial style cottages, these are surely two of the most delightful period homes in the country.

Together, Rosehill House and Dale House, sport over ten dressed period rooms, several galleries and breathtaking views over the valley below.

Just a stones throw from the Museum of Iron, the houses are served by the wonderful catering, welfare and production facilities at our Coalbrookdale site.

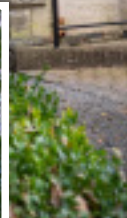
The uppermost floors of the two houses have been converted into domestic dwellings, and are therefore unavailable for productions.



Rosehill House



Dale House



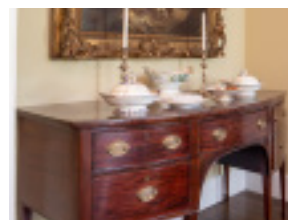




## The Darby Houses

### Entrance

Dale House's entrance and hallway leads onto three rooms and a wooden staircase at the far end. Perfect for scenes featuring arrivals and departures, this area could be easily dressed to suit your specific requirements.



## The Darby Houses

### Dining Room

Rosehill House's Dining Room displays an opulent and characterful interior, typical of upper class households at the time of the Industrial Revolution. With two large windows, this light filled room is both inviting and homely.







## The Darby Houses

## Rosehill Study

The study at Rosehill House sports a large wooden desk, decorative furniture, and two large windows. The exposed wooden floor is accompanied by wood panelling along the lower portion of the walls and a large cabinet opposite the desk.



## The Darby Houses

## Kitchen

A typical service kitchen from the early Victorian period, this room features a tiled floor and rudimentary decoration. It is furnished with a food preparation table, cooking utensils and a traditional range, and is found to the rear of Rosehill House's ground floor.



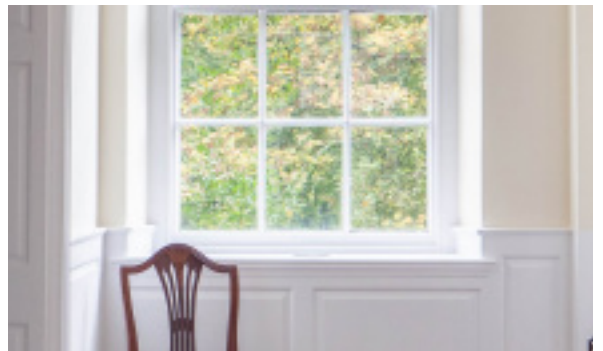




## The Darby Houses

### Bedroom

This quaint bedroom resides on the first floor of Rosehill House, and features a single four-poster bed, fireplace and seating area. Complete with two windows, wooden flooring and lightly patterned wallpaper, this traditional room feels both cosy and contemporary.



## The Darby Houses

### Parlour

Rosehill's parlour is on the first floor, and represents a typical, informal meeting and entertaining space. At its centre lies a large wooden table, surrounded by four chairs and topped with a typical 'afternoon tea' set. The room is complemented by a period fireplace, seating area and pair of traditional dressers.



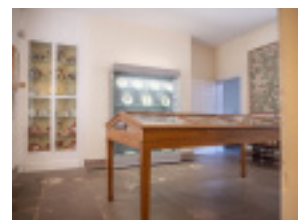




## The Darby Houses

## Stairs & Landing

The stairs and landing of Rosehill House demonstrate the scale and grandeur of the houses, as well as providing some excellent views onto nearby buildings and courtyards. The winding staircase spans the building's three floors and is bordered by extravagant wooden balustrades.



## The Darby Houses

## Galleries

The house's galleries display a range of exhibits which tell the story of the Darby family and their connection to the Coalbrookdale works. These versatile spaces cover a wide area, and snake around both the first, and ground floors of Rosehill House.



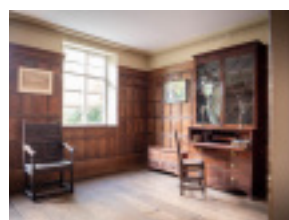




## The Darby Houses

### Archive Room

The Archive Room sits on the ground floor of Dale House. It's three windows flood the room with light and provide excellent views onto the valley below. It's modest decoration makes this room an excellent canvas for custom set dressing.



## The Darby Houses

### Darby's Study

Darby's Study resides in the ground floor rear corner of Dale House. It's wood panelled walls and exposed floor boards exude character, and present this room as particularly unique within our estate. Sparsely furnished, this room could easily be transformed to meet your production's needs.







Broseley Pipeworks Front Elevation

## Broseley Pipeworks

Duke St, Broseley, TF12 5LX

A former clay and tobacco pipe factory, abandoned in 1957, Broseley Pipeworks is the perfect setting for all kinds of productions.

Fronted by a small cemetery, and housing a modest courtyard, quaint period workshops and curious offices, this is one of those places that you just have to visit!

The workshops within retain the furniture and equipment used by workers decades ago, to produce products that were not only used, but coveted, the world over.

The undisturbed interior features elements not found elsewhere, and is a location manager's dream.

With a small car park at the front, and welfare facilities within, Broseley is capable of sustaining small to medium sized productions, without needing to setup a production base elsewhere.

In addition our Coalbrookdale and Coalport sites are just a few minutes drive away.



Courtyard



Main Entrance







## Broseley Pipeworks

## Courtyard

The enclosed courtyard is surrounded by beautiful brick walls on all sides, it's shadowy centre perfect for filming at almost any time of day. With external stairs on one side, and windows all around, you can capture the action from any angle.



## Broseley Pipeworks

## Period Workshops

Full to the brim with characterful, cosy rooms and workshops, Broseley Pipeworks is the ideal setting for period scenes that ooze atmosphere. Spread over three floors, and several buildings, the complex contains a multitude of settings, each with their own unique characteristics.







Coalbrookdale Long Warehouse

## PARKING

Blists Hill Victorian Town, Coalbrookdale Museum of Iron and Coalport China Museum all sport sizeable hard standing public car parks, suitable for both large, and heavy, goods vehicles.

Our nearby satellite sites offer modest parking options.

## CATERING

Our experienced in-house catering team are completely flexible and will be happy to assist you in feeding cast and crew members during production. From take-aways to sit-down meals and three-course banquets, they can do it all.



The Squatters Cottage  
at Blists Hill Victorian Town



Broseley Pipeworks

## CURATORIAL SUPPORT

If you're looking to gain accurate historical insight into our buildings, exhibits, or the story of this area, then speak to our Curatorial team who will be happy to assist you in your enquiries.

## PRODUCTION FACILITIES

As you can see throughout this guide, we are not short of space! We have many buildings with vacant spaces suitable for both temporary, and long term use as a production office, DIT facility or equipment store.





▲ The Iron Bridge Tollhouse Exhibition

◀ 'Billy' The Steam Roller



Coalport Pottery Workshop ▲

Bedlam Furnace ►



▲ Tile Mould Vault

◀ The Coach House





▲ Inside a Bottle Kiln at Coalport China Museum

◀ Kieran & George the Shire Horse



▲ Decorative Ironwork on the Iron Bridge

▶ Jackfield exterior wall



▲ Broseley Pipeworks' courtyard

◀ Tiled Pub Setting at Jackfield Tile Museum





Passageway beneath the Iron Bridge ▲

Coalport China Museum's shop ▶



▲ Narrow staircase at Broseley Pipeworks

◀ The River Sever beside Jackfield and Coalport



Coalport Works' courtyard ▲

Coalbrookdale Library & Archive ▶





# FILM & TV LOCATIONS

**THE IRONBRIDGE GORGE  
MUSEUM TRUST**

The Ironbridge Gorge Museum Trust Limited is registered in England under the Companies Act 1948 Reg No. 918560 and the Charities Act 1960 Ref No. 503717-R.